

**LEASE SPACE LAY-OUT**  
**1305 DISTRIBUTOR'S ROW-SUITE D-H**  
**JEFFERSON, LOUISIANA 70123**

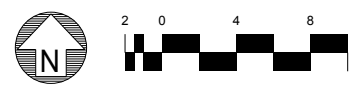
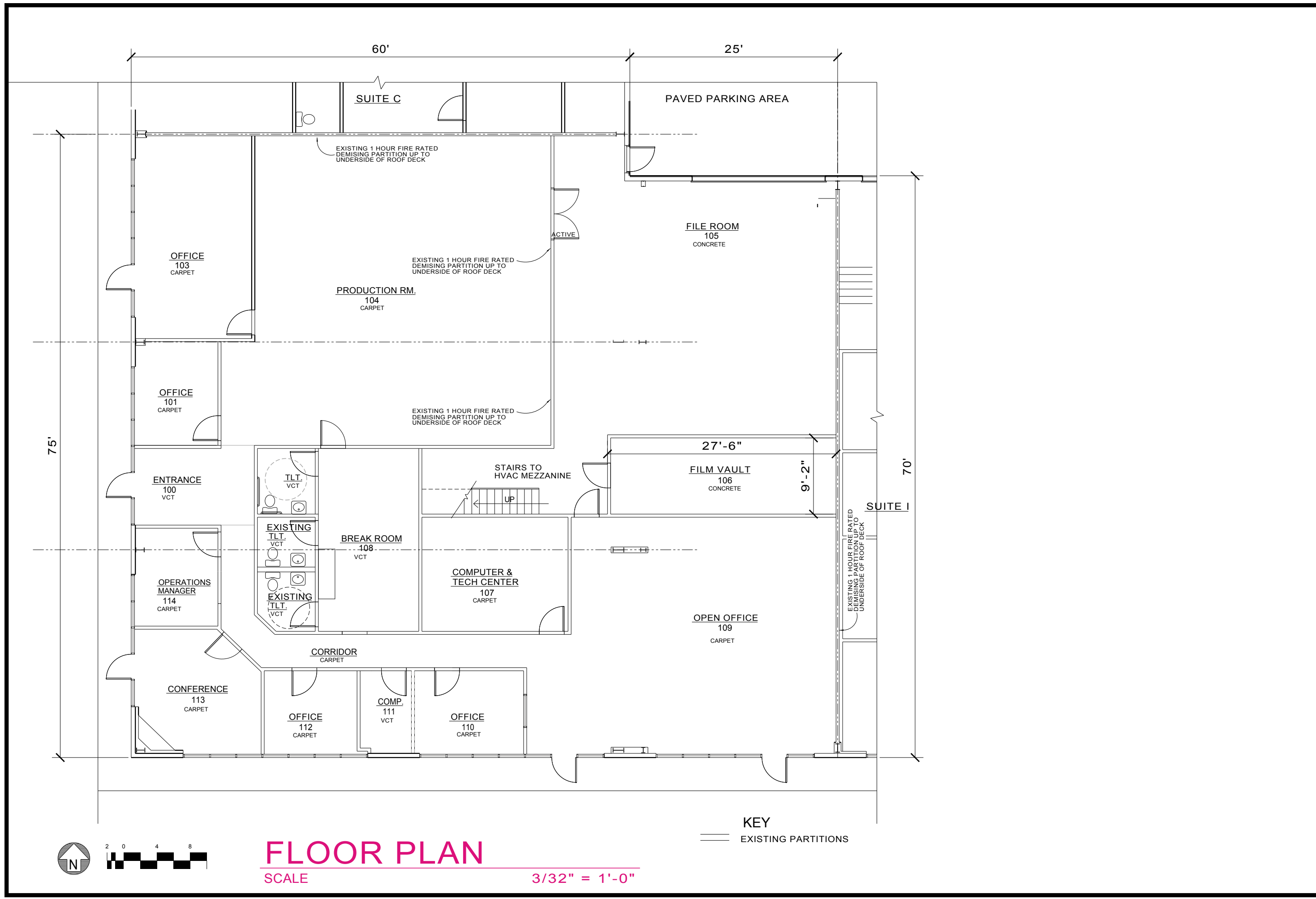
SEAL

REVISIONS

DATE  
 JULY 5, 2007  
 DRAWN BY  
 T. LOWRIE  
 CHECKED BY  
 T. LOWRIE

SHEET NO

**1**  
 OF TWO



**FLOOR PLAN**  
 SCALE **3/32" = 1'-0"**

**KEY**  
 ——— EXISTING PARTITIONS