

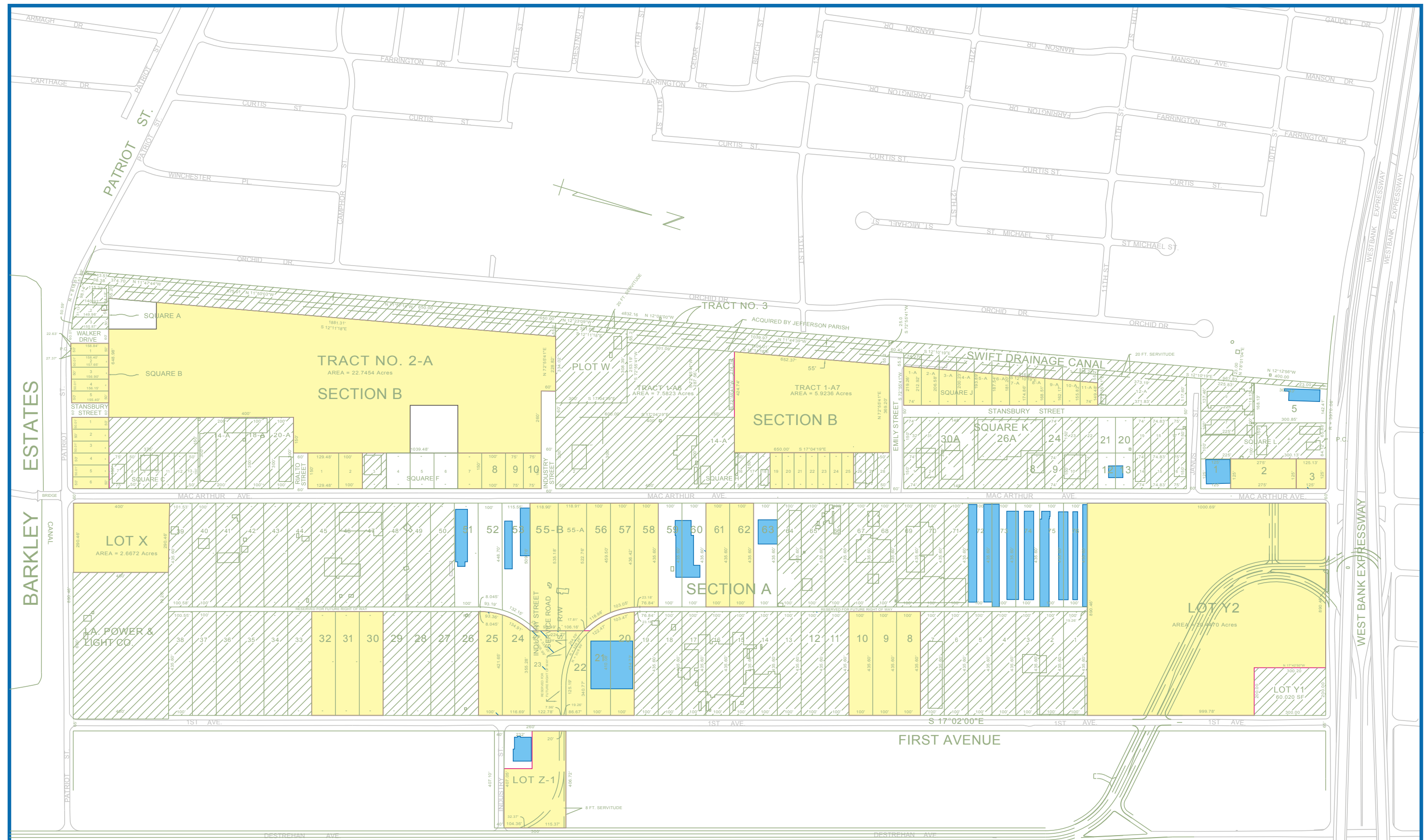
MARRERO INDUSTRIAL SUBDIVISION
PORTIONS OF LOTS 9 & 11, DESTREHAN DIVISION
 HARVEY, LOUISIANA 70058

SEAL

REVISIONS

DATE
 MAY 16, 2001
 DRAWN BY
 T. LOWRIE
 CHECKED BY
 T. LOWRIE

SHEET NO
1
 OF ONE



THIS PLAT IS NOT A PROPERTY BOUNDARY SURVEY
 AND AS SUCH DOES NOT COMPLY WITH THE LOUISIANA
 "MINIMUM STANDARDS FOR PROPERTY BOUNDARY SURVEYS."



- LEGEND:
- = SOLD
 - = AVAILABLE
 - = UNDER LEASE OR NOT AVAILABLE

REVISED SEPTEMBER 1, 2016